

Silver Creek

Premier Commercial Development

Stone Trace Drive • Mt. Sterling, KY

For More Information Contact:

Don Sebastian
CCIM

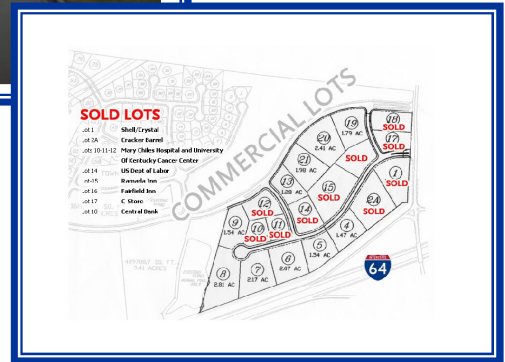
**Prudential
CRES Commercial
Real Estate**

859 281-1234 • Office
859 281-1242 • Fax

E-Mail:
don@PrudentialCRESLex.com

Office:
1716 Sharkey Way
Lexington, KY 40511

Website:
www.prudentialcreslex.com



Multiple Commercial Lots 0.9 - 2.81 Acres

- Lots can be reconfigured for specific tenant requirements
- Excellent visibility - Located at I-64 & Maysville Rd (Hwy 11)
- Call today for your complete information package!

